

JOINT
ANALYTICAL
CELL



SKYLIGHT
A product of AI2

C4ADS

The Joint Analytical Cell (JAC): Integrating data, tools and expertise to support national, regional and global MCS efforts

Eleanor Partridge - TMT



Overview

1. What is the Joint Analytical Cell?
2. Why was it founded?
3. How does it work?
4. What does the JAC do?



What is the Joint Analytical Cell?

- Collaborative initiative - established 2021 by the International MCS Network, Global Fishing Watch and TMT
- Joined in 2022 by Skylight and C4ADS
- Building on members' existing efforts to support fisheries MCS
- Leveraging complementary expertise and data to support partner countries, primarily developing States, more effectively and more efficiently

JOINT
ANALYTICAL
CELL

INTERNATIONAL
MCS
NETWORK

Global
Fishing
Watch

TMT

SKYLIGHT C4ADS
A product of AI2

Goals and mechanisms

- Detecting, deterring, and eliminating Illegal, Unreported, and Unregulated (IUU) fishing activities;
- Increasing overall transparency of fishing activities at sea;
- Building the capacity of developing countries to more effectively and efficiently implement and maintain their own fisheries MCS regimes; and
- Leveraging data and technology to inform and support global fisheries policy and governance processes and strengthening.

Primary mechanism: Provision of support to MCS practitioners

Secondary mechanism: Provision of data and intelligence to evidence-based and ground-truth policy and regulatory development

Seed funding from philanthropic donors, seeking national funding to scale and ensure sustainability



Why was it founded?

- Huge advances in State and non-State actor collaboration and public-private partnerships
- Increasing number of NGOs providing data, intelligence, training and other services
- Potential for competition, duplication & confusion around the multitude of organisations, and data platforms
- By working collaboratively through the JAC we can:
 - Leverage complementary data and expertise to provide better support
 - Reduce duplication of efforts, increase efficiency
 - Increase clarity around applications of tools and data

“We believe that the whole is greater than the sum of its parts. By combining our different strengths and areas of expertise, as well as our existing initiatives, tools and partnerships, we can amplify their impact”

- *Tony Long, CEO, Global Fishing Watch*



Coordinated planning & delivery

Partners can access support, data and expertise from multiple organisations. JAC members work to coordinate efforts and avoid duplication.



Streamlined communications

Communication channel can be limited to a single identified JAC member, or expanded, as appropriate



Targeted support

Provision of support based on needs identified through consultative needs assessment process

JAC members



An intergovernmental organisation that supports information sharing, collaboration and capacity building between fisheries law enforcement professionals. Leads on **MCS capacity building and training**, works to ensure JAC output is tailored to support MCS practitioners



Global Fishing Watch

An international non-profit dedicated to advancing ocean governance through increased transparency of human activity at sea. Provision of **tools and data** powered by satellite tracking, remote sensing and machine learning to support analysis of fishing-related activity



A Norwegian NGO that provides national fisheries authorities and intergovernmental organisations with intelligence, analysis and targeted training to assist enforcement actions and broader improvements in fisheries governance. **Human analysis** of a wide range of data sources, focused on vessel and company intelligence.



A maritime monitoring and analysis software platform providing MCS practitioners with a near real-time tool to identify suspicious vessel behaviour and take action, including access to **remote sensing data**

C4ADS

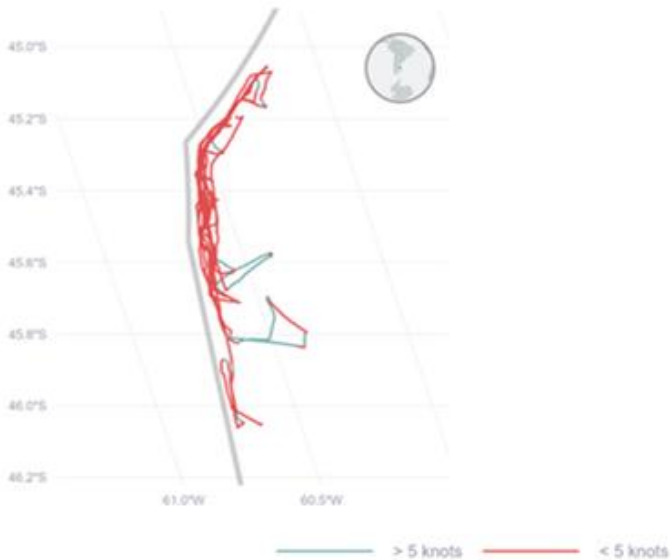
A non-profit organisation with a mission to defeat the illicit networks that threaten global peace and security, through application of data science, innovative technology and evidence-driven analysis. Focus on **beneficial ownership and corporate network analysis**.

JOINT
ANALYTICAL
CELL



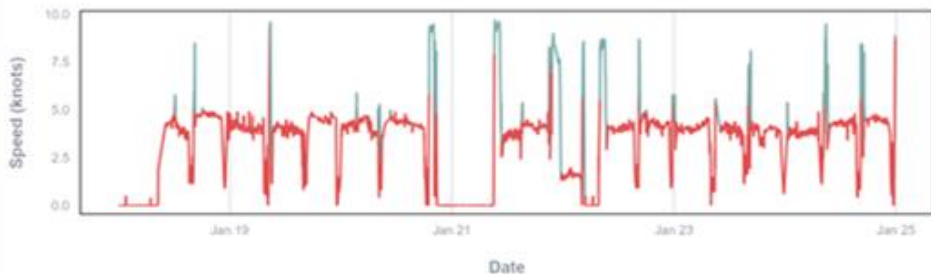
C4ADS

LU RONG YUAN YU 715
412331284



Intelligence support

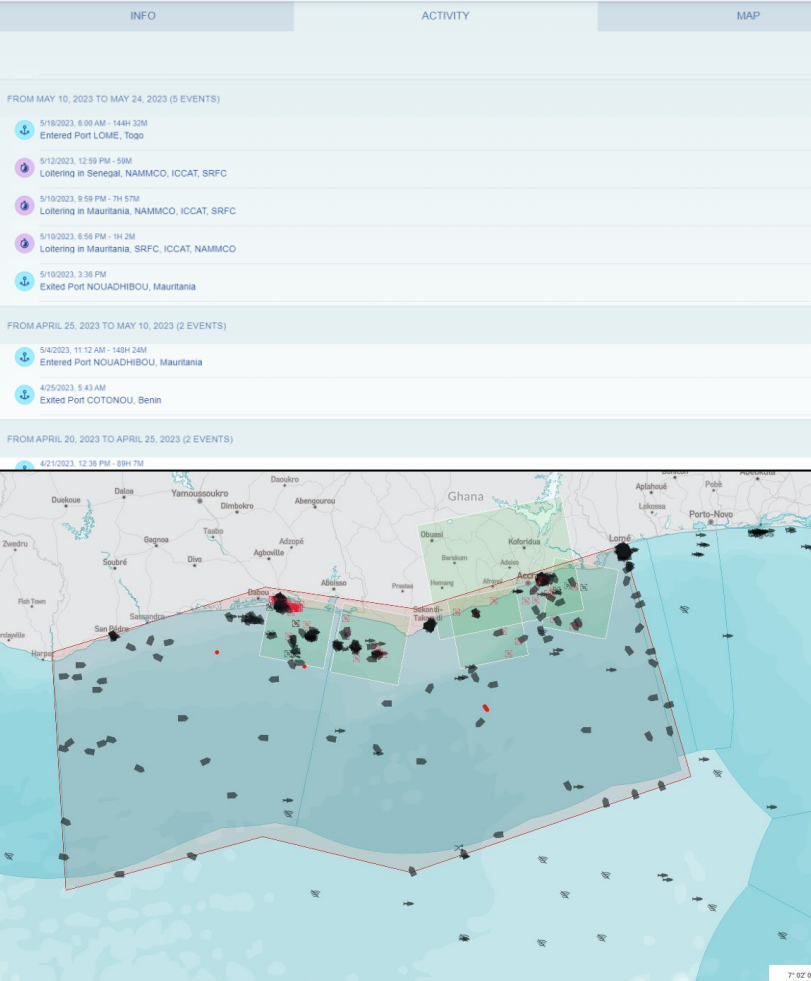
- Actionable fisheries intelligence
- Emphasis on intelligence products that can be actioned and lead to impact on the water
- Proactive and reactive
- Analysis of the full chain of fisheries operations - from dark vessel detection, through vessel tracking, document analysis, vessel identities, to onshore network and ownership analysis





MCS capacity building

- Targeted training, and support to SOP development
- Priorities identified through MCS capacity needs assessment
- Train the trainer, mentoring and on-the-job training
- Focus on building capacity to apply data and technology to fisheries MCS
- Platform agnostic



Access to data and technology

- Access and training on free-to-use tools and platforms provided by JAC members
- Feedback to strengthen tools for MCS applications
- Application of new and emerging data sources and technologies, through members' R&D



Partnership development

- Actively seeking collaborations with other NGOs, IGOs and tech/data providers working in this space, to strengthen our offering
- Utilising JAC member networks to establish and strengthen communication channels between partner countries
- Hub for technology, data and operational support - partner countries can also share technology and expertise through the JAC



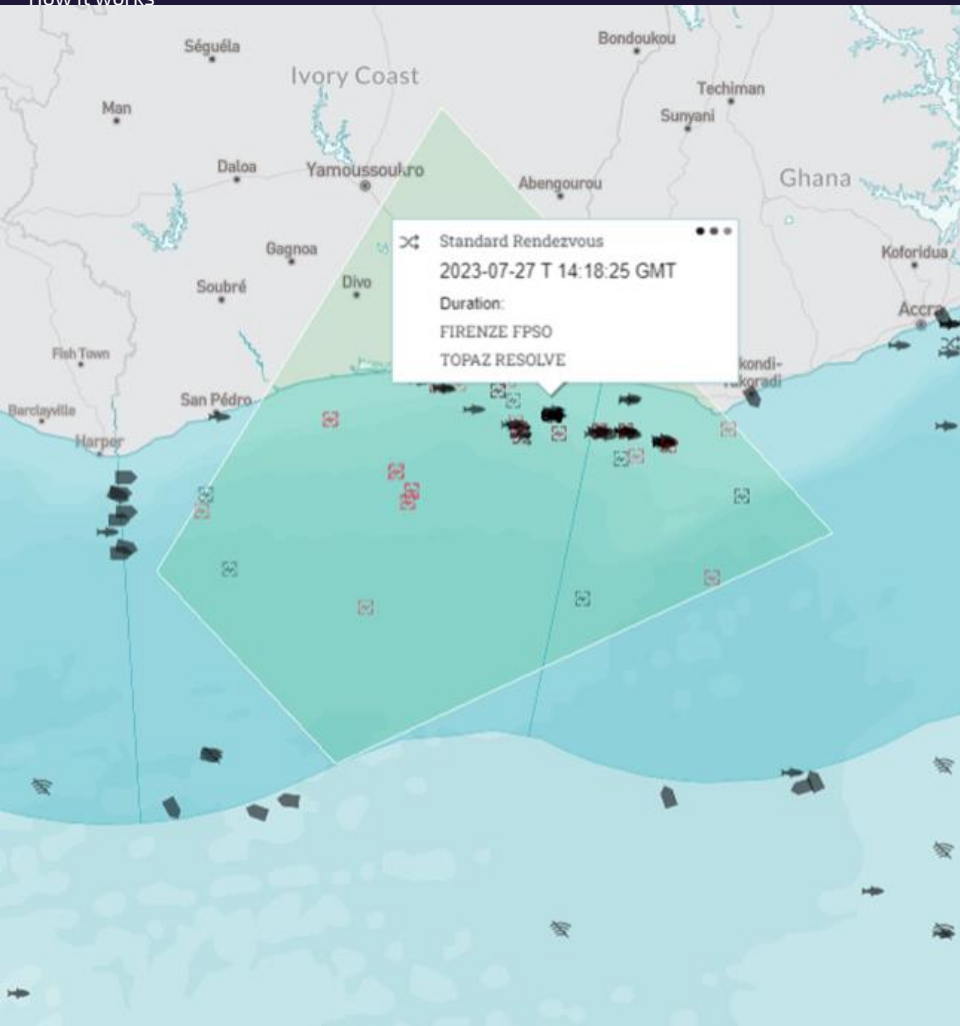
Focus areas

- PSMA AREP risk assessment and capacity support
- Fisheries patrol planning and support
- Transshipment monitoring programmes
- Action-centric MCS capacity building
- Global issues of interest - analysis provided to partners to inform operational decision-making and regulatory development



Case study: QIAN YUAN

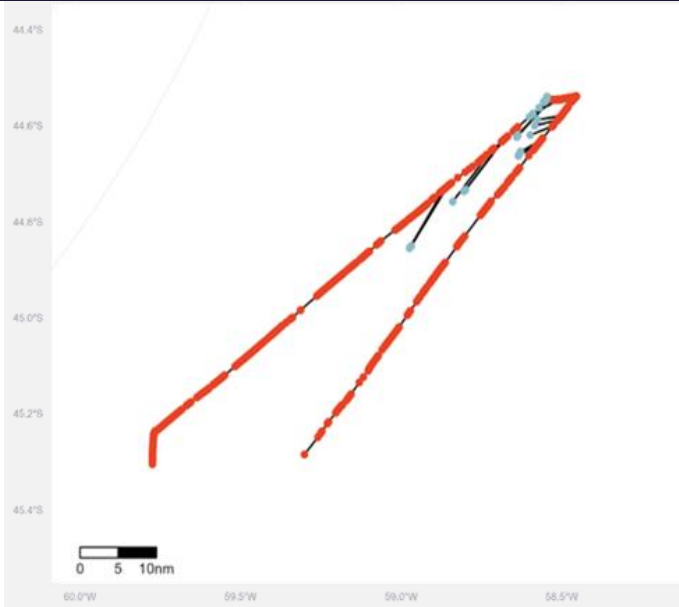
- Reefer vessel – license suspended by Panama but reports of continued operations
- Intrep identified encounter and loitering events in the NPFC area, indicative of potential transshipment
- Risk history, including provisional IUU listing in 2014, false flagging incident and detention under Tokyo MOU
- Shared with Panama, INTERPOL, NPFC and port State South Korea – joint inspection conducted with JAC support
- IUU listed by NPFC July 2023
- Vessel fined \$735k USD by Panama



Case study: Patrol support

- Two patrols supported to date
- Zone G (with UNODC) - Gambia, Cabo Verde, Guinea Bissau, Senegal
- FCWC - Ghana and Côte d'Ivoire
- Form of support targeted to identified need / fill gaps in data and intelligence, can include:
 - Pre-operational support - including identification of AOIs
 - Identification of vessels of interest
 - Live patrol support
 - Tasking of remote sensing data
 - Rapid-response intel and follow-up analysis on vessels encountered
 - On the job training

Case study: Identification of high risk behaviour by Chinese squid vessels



- Building on a tip-off from an IMCSN member regarding suspicious vessel identities close to their EEZ
- One MMSI multiple vessels AND one vessel multiple MMSIs AND one vessel multiple names
- Links to vessels IUU listed by NPFC
- Motivation unclear and not clearly illegal, but significant challenge for monitoring vessel numbers and identities
- Alerts provided to port and coastal States with potential to encounter the vessels
- Findings shared with China MOFA - overview analysis will be released August



About the Joint Analytical Cell:

The Joint Analytical Cell, or JAC, provides authorities with fisheries intelligence, data analysis and capacity building to help combat illegal, unreported and unregulated fishing. Founded by the International Monitoring, Control and Surveillance Network, Global Fishing Watch and TM-Tracking, the initiative harnesses innovative technology and the complementary expertise of its collaborating organizations to improve the effectiveness of fisheries monitoring, control and surveillance. By fostering cooperation among State and non-State partners, the JAC seeks to build insights and capacity that will help enhance fisheries management.

Contact: jac-coord@tm-tracking.org

www.imcsnet.org | www.globalfishingwatch.org | www.tm-tracking.org